



# **Description of the Communication protocol**

for Series 30 and Series40 pressure transmitters from KELLER

Class.Group = 5.20

Class.Group = 5.21

**Version 3.4**



|          |  |           |
|----------|--|-----------|
| <b>1</b> | <b>Introduction</b>                                    | <b>3</b>  |
| <b>2</b> | <b>Bit transfer layer (physical layer)</b>             | <b>3</b>  |
| 2.1      | Introduction   | 3         |
| 2.2      | Characteristic   | 3         |
| 2.3      | RS485 half-duplex details                              | 4         |
| <b>3</b> | <b>Data-link layer</b>                                 | <b>5</b>  |
| 3.1      | Transmission format for the serial interface           | 5         |
| 3.2      | Format of a message                                    | 5         |
| 3.3      | Principle of message interchange                       | 6         |
| <b>4</b> | <b>MODBUS communication</b>                            | <b>8</b>  |
| 4.1      | MODBUS Communication Basics                            | 8         |
| 4.2      | Using MODBUS with KELLER products                      | 8         |
| 4.3      | Description of MODBUS functions                        | 9         |
| 4.4      | Modbus Communication Examples                          | 9         |
| 4.5      | Function 3: MODBUS Register Read                       | 9         |
| 4.6      | Function 6: MODBUS Single Register Write               | 10        |
| 4.7      | Function 8: MODBUS Echo Test                           | 10        |
| 4.8      | Function 16: MODBUS Register WRITE                     | 11        |
| 4.9      | MODBUS Register Map                                    | 12        |
| 4.10     | Device Operation Command List                          | 17        |
| <b>5</b> | <b>Description of Keller bus functions</b>             | <b>18</b> |
| 5.1      | Example: read pressure value with exception handling   | 18        |
| 5.2      | Function 30: Read coefficient                          | 19        |
| 5.3      | Function 31: Write coefficient                         | 21        |
| 5.4      | Function 32: Read configuration                        | 22        |
| 5.5      | Function 33: Write configuration                       | 22        |
| 5.6      | Function 48 : Initialise and release                   | 24        |
| 5.7      | Function 66 : Write and read new device address        | 25        |
| 5.8      | Function 69 : Read serial number                       | 25        |
| 5.9      | Function 73 : Read value of a channel (floating point) | 26        |
|          | Function 74 : Read value of a channel (32bit integer)  | 27        |
| 5.10     | Function 95 : Commands for setting the zero point      | 28        |
| 5.11     | Function 100 : Read configuration                      | 29        |
| <b>6</b> | <b>Appendix</b>  | <b>30</b> |
| 6.1      | Interface converter                                    | 30        |
| 6.2      | Floating-point format IEEE754                          | 30        |
| 6.3      | Error handling and recognition                         | 31        |
| 6.4      | Calculation of the CRC16 checksum                      | 33        |
| 6.5      | Changes  | 34        |
| 6.6      | Software versions                                      | 34        |
| 6.7      | Support  | 35        |



## 1 Introduction

This document describes the communications protocol for the Series 30 digital pressure transmitters from KELLER Druckmesstechnik. In addition to these transmitters, other devices such as data loggers or manometers are also offered. These products are distinguished by the designation CLASS. Within this device class, the individual device groups are differentiated by the designation GROUP. All Series 30 pressure transmitters bear the CLASS designation 5.

The software version number consists of following components:

| short-designator: | Class        | Group | Year                     | Week                     |
|-------------------|--------------|-------|--------------------------|--------------------------|
|                   | Device group |       | SW-Version               |                          |
| Series 30 and 40  | 5            | 20    | SW-Version: release year | SW-Version: release week |
| Series 30 X2      | 5            | 21    | SW-Version: release year | SW-Version: release week |

In this document, the software version is defined by **Class.Group-Year.Week**, e.g. 5.20-5.50.

The protocol itself is based on MODBUS, but incorporates optimised functions for the device, these functions are called Keller bus functions. However, minimum (only fct3) MODBUS RTU functionality is implemented for devices CLASS.GROUP = 5.20 with firmware 2.40 and newer. Full MODBUS support is provided from firmware 5.20-10.XX on and in 5.21-XX.XX.

See Appendix for an overview of the different versions.

## 2 Bit transfer layer (physical layer)

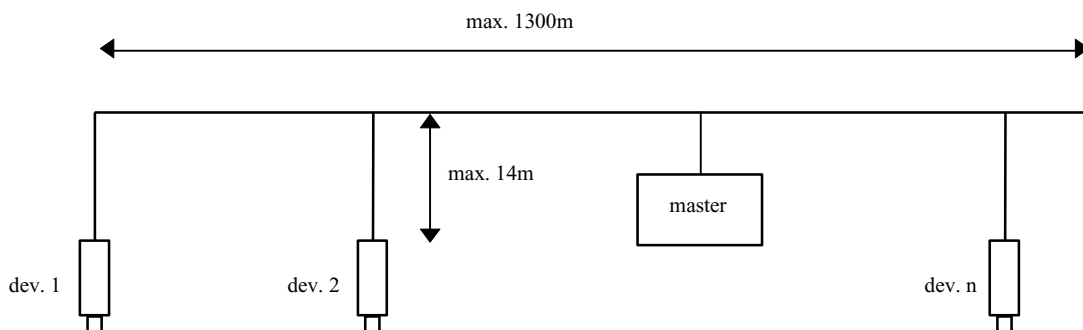
### 2.1 Introduction

The physical connection is provided by the RS485 serial interface. This guarantees good interference immunity and enables a flexible bus structure, i.e. several devices can be administrated as slaves by a single master. In order to minimise the scope of cabling, the RS485 is used in **half-duplex** mode. This means that 2 wires are required for communications and 2 wires for power in feed.

### 2.2 Characteristic

In order to operate several devices at one serial interface, they are simply all connected in parallel (RS485A, RS485B, GND and +Vcc). Before incorporating the devices into the bus, each device must be programmed with a different address.

It is possible to configure a network up to a length of 1300 metres with a maximum of 128 devices. Each riser cable may be up to 14 m in length. The employed cable should correspond to specification EIA RS485.





### 2.3 RS485 half-duplex details

To ensure best possible operation in an industrial environment Keller uses RS485 driver with tailored characteristics. To provide compatibility and get full advantage the bus driver of the master device has to support these specifications.

- slew rate limited    In order to avoid oscillations and interference the signal slew rate is limited. This measure allows also usage of standard cables or non-standard topologies (e.g. level detectors or branch lines >> 14m). The more, termination is less critical and has not to be implemented compulsorily at the line ends, a feature important for level detectors.
- fail safe            Defined signal level – even in short or open circuit case. This is very important for half-duplex operation if all devices are in reception mode – here the line is open in case that no bias resistors are implemented at the master.
- 1/8 unit load        Input impedance is lower than defined by the RS485 standard, this allows connecting up to 128 devices to the bus.

#### Termination

Layout: between A and B at the beginning and the end of the transmission line

Value: the same as the line-impedance. Type.: 120Ohm.

In case of a fail-safe master driver (interface converter to the PC) and a noise-free environment the termination resistor are not mandatory. To reduce current peaks the resistor value can be chosen higher (1kOhm) or omitted (while transmitting the current needed for 2x120Ohm is about 50mA).

To ensure a stable communication at least one terminal resistor is necessary (mostly included in the master-RS485 driver)! One can do without a terminal resistor, if the environment is free of interference and the cable is held short (a few meters).

If the transmitter has additionally an analogue 4...20mA (two wire) output which will be used simultaneously with the serial communication, it could be useful to communicate without terminal resistor. Otherwise the analogue current signal will have heavy interferences. See application note: **App. Note S30X-011 RS485 and current loop.pdf**

The transmitters will never have a terminal resistor built in internally.

#### Bias-resistors

To keep up having always defined voltages one can switch pull-up respectively pull-down resistors to the transmitter:

From A to +5V and from B to GND. This is necessary when such RS485 drivers are in use which are not fail-save. This is not necessary for our products when the master is fail-safe.

#### Common Mode

The common-mode of the data circuit line is +12 / -7V down to GND. It is essential to keep up with this. Always connect the GND of the RS485 converter of the master with GND of the transmitter!

#### Definition of data circuit line assignments

| signal           | Designation of Keller and divers manufacturers... | Designation of the EIA Standard |
|------------------|---|---------------------------------|
| inverted (-)     | B   | A                               |
| non-inverted (+) | A   | B                               |

Further information on RS485: <http://www.maxim-ic.com/MaximProducts/Interface/rs-485.htm>



### 3 Data-link layer

This section describes how data interchange is affected on this bus. The data and their check and control structures are grouped together to form messages. These constitute the smallest communication unit, i.e. only messages can be exchanged between the devices. As a half-duplex protocol is in use here, only one device can use the bus as a transmitter at any one time. All other devices are then in receive mode. The master takes the form of a PC or microcontroller, for example, and the devices are the slaves. Each message exchange takes place under the control of the master. The message contains the address for the receiving slave.

This results in the following 2 options for data interchange:

- a) Broadcasting                      This mode of communication enables the master to transmit a message to all slaves simultaneously. The master does not receive a reply, however, and is thus unable to check whether the message has been correctly received by every slave.
- b) Data interchange                This mode of communication enables the master to communicate with a single slave. This normally involves the transmission of two messages: the master transmits a request and the slave responds to this request. Only the master is permitted to request a response. The request is received by every slave, but only the selected slave responds. The response must be received within a stipulated time, otherwise the master will assess the attempt as failed and must transmit the request again.

#### 3.1 Transmission format for the serial interface

The data are transmitted serially via the bus. The following format applies:

- 1 start bit
- 8 data bits (the least significant bit first)
- 1 stop bit
- no parity (default)
- 9600 baud (default) or 115'200 Baud

This results in 10 bits (11 bits with active parity bit) per transmission byte.

#### 3.2 Format of a message

##### 3.2.1 Format of the message sent by the master

Note on the presentation of messages: Each box presents 1 data byte consisting of 8 bits, unless otherwise stated.

Each message sent by the master possesses the following format:

|         |   |               |                              |                                  |                                  |
|---------|---|---------------|------------------------------|----------------------------------|----------------------------------|
| DevAddr | 0 | Function code | n byte parameters (optional) | KELLER:CRC16_H<br>MODBUS:CRC16_L | KELLER:CRC16_L<br>MODBUS:CRC16_H |
|---------|---|---------------|------------------------------|----------------------------------|----------------------------------|

- **DevAddr:** Address of the device.  
Address 0 is reserved for broadcasting.  
Addresses 1...249 can be used for bus mode.  
**Address 250 is transparent** and reserved for non-bus mode. Every device can be contacted with this address.  
Addresses 251...255 are reserved for subsequent developments.
- **Function code:** Function number  
A function is selected and executed by the device via the function number. The function number is encoded in 7 bits. Bit 7 is always 0. The functions are described further below.
- **Parameters:** The parameters required by the function (n = 0 .. 6, according to function)



- **CRC16: 16-bit checksum**  
These two check bytes serve to verify the integrity of the received data. If an error is established, the entire message will be discarded. The principle employed for CRC16 calculation is described in the appendix. The CRC16 standard is applied here.

Note: The length of a message from the master is at least **4** bytes.

### 3.2.2 Format of the message sent by the slave

A message transmitted by the slave possesses the following format:

|         |          |               |                        |                                  |                                  |
|---------|----------|---------------|------------------------|----------------------------------|----------------------------------|
| DevAddr | <b>X</b> | Function code | n byte data (optional) | KELLER:CRC16_H<br>MODBUS:CRC16_L | KELLER:CRC16_L<br>MODBUS:CRC16_H |
|---------|----------|---------------|------------------------|----------------------------------|----------------------------------|

- **DevAddr:** Address of the device. This address corresponds to the address of the responding device.
- **Function code:**  
The function number is identical to the function number sent by the master. If the most significant bit is  $X = 0$ , this indicates that the function has been executed correctly. **If bit  $X = 1$ , an exception error has occurred.**
- **Data:** Any data requested via the function follow here.
- **CRC16:** See above.

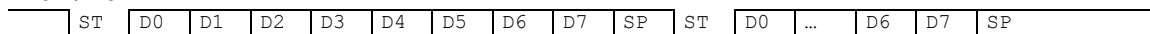
Note: A message from the slave has a minimum length of **5** bytes, and a maximum length of **10** bytes (*Class.Group-version = 5.20-XX.XX*) or **100** bytes (*Class.Group-version = 5.21-XX.XX*).

## 3.3 Principle of message interchange

### 3.3.1 General rules

- An address may only be allocated to **one** device connected to the bus. If two devices on the bus have the same address, both will respond, leading to a conflict.
- Every data interchange is initiated by the master. This means that a device may only transmit data if requested to do so by the master.
- A message consists of several bytes. These bytes are transmitted **without any interruption**.  
Maximal time between two bytes:  
1.5ms @ 9600 baud (1.5 byte length)  
0.20 ms @ 115200 baud (2.3 byte length)  
If the time between two bytes exceed the specified time, the slave ignores the received data, because of wrong message length or CRC value. In that case the answer is omitted.
- The addressed device must respond within time  $T_1$ , otherwise the message will be invalid.

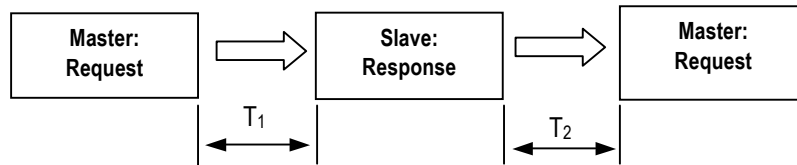
#### Bit frame:



ST: start bit, SP: stop bit. A parity bit (if active) is inserted before the SP, D0 .. D7: 8 data bits



### Message frame:



### Response times:

- $T_1$ : Time between receipt of inquiry and beginning of response.  
 min 1.2 ms @ 9600 baud to max. 100ms for all functions and devices.  
 min 1 ms @ 115200 baud to max. 100ms for all functions and devices.  
*firmware 5.20:* Most functions (except those with EEPROM access like information values):  $T_1$  min. 1.2... 3ms  
*firmware 5.21:*  $T_1$ : 1.3ms – 1.8ms for F30, F32, F48, F69, F73 and F74  
 $T_1$ : 7.3ms – 7.6ms for F31, F33, F66 and F95  
 With Modbus communication the duration of  $T_1$  depends on the number of register to read or write, while write takes much more time than read. (Write: typ. 7.2ms per register)
- $T_2$ : Time to ready-to-receive state for the slave:  
 min 0.5 ms @ 9600 baud  
 min 0.5 ms @ 115200 baud

### 3.3.2 Treatment of errors

2 types of errors may occur during the interchange of messages between master and slave: transmission errors and exception errors.

#### 3.3.2.1 Transmission errors

These errors are primarily accountable to line faults. The message format is incorrect. The following problems are possible:

- A received message is too short. → e.g. too much of time gap in frame between the bytes.
- A message is longer than the internal transmission buffer permits.
- The word length cannot be interpreted correctly.
- The CRC16 checksum is incorrect.

In these cases the slave denies the request and will therefore **not reply**. This will lead to a timeout at the master. ▯ the request has to be repeated again.

In response to a transmission error, all received data are ignored. The slave remains in receive mode while the master is required to initiate a new data interchange.

#### 3.3.2.2 Exception errors

The message has been received correctly (no transmission error has occurred), but the transmitted function number and/or the parameters are invalid. **The slave responds with an exception error**, unless the message has been received in broadcasting mode.

The message transmitted as a response by the slave has the following format:

|         |          |               |                |                                    |                                    |
|---------|----------|---------------|----------------|------------------------------------|------------------------------------|
| DevAddr | <b>1</b> | Function code | Exception code | KELLER: CRC16_H<br>MODBUS: CRC16_L | KELLER: CRC16_L<br>MODBUS: CRC16_H |
|---------|----------|---------------|----------------|------------------------------------|------------------------------------|

5 types of exception errors are defined:

- illegal non-implemented function 1
- illegal data address 2
- illegal data value 3
- Slave device failure 4
- initialisation (only KELLER bus) 32

Exception error 32 occurs when the device is started up anew and initialisation has not been carried out. This happens every time the device is connected anew after a break in the power supply.



## 4 MODBUS communication

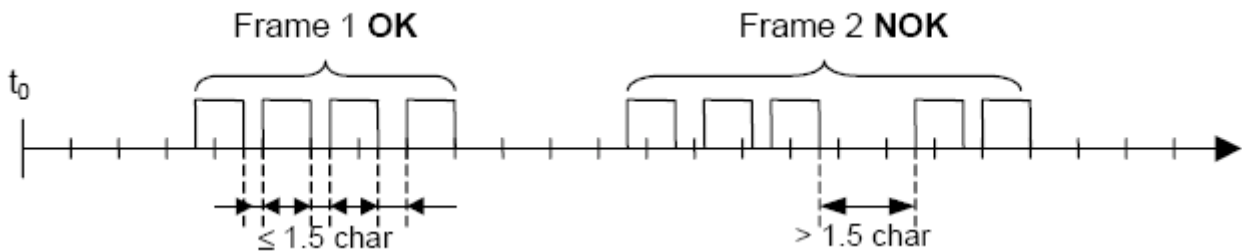
### 4.1 MODBUS Communication Basics

|                           |   |
|---------------------------|---|
| <b>Mode:</b>              | RTU Mode (ASCII is not supported)   |
| <b>Coding System:</b>     | 8-bit binary, hexadecimal 0–9, A–F  |
|                           | Two hexadecimal characters (bytes) contained in each 8-bit field of the message |
| <b>Bits per Byte:</b>     | 1 start bit   |
|                           | 8 data bits, least significant bit sent first                                   |
|                           | No parity (default) 1 parity bit: even or odd parity (programmable)             |
|                           | 1 stop bit (default) 2 stop bit (programmable) <i>only firmware 5.21-XX.XX</i>  |
| <b>Error Check Field:</b> | 2 Byte Cyclical Redundancy Check (CRC)  |
| <b>Baudrate:</b>          | programmable 9'600 or 115'200   |

#### Frame Layout:

|                                      |               |                   |                                   |                             |                                    |
|--------------------------------------|---------------|-------------------|-----------------------------------|-----------------------------|------------------------------------|
| > 3.5 char (byte)<br>start delimiter | 8 bit<br>addr | 8 bit<br>fkt code | n x 8bit<br>data<br>(max n = 252) | 16 bit<br>CRC<br>LOW / HIGH | > 3.5 char (byte)<br>end delimiter |
|--------------------------------------|---------------|-------------------|-----------------------------------|-----------------------------|------------------------------------|

The entire message frame must be transmitted as a continuous stream of characters. If a silent interval of more than **1.5 character times** occurs between two characters, the message frame is declared incomplete and should be discarded by the receiver.



#### Bus Addressing:

*Unicast addresses:* each slave has an address between 1 and 247.

*Broadcast addresses:* address 0 is used for broadcast frames, the slave accepts the command but must not generate an answer.

*Special addresses:* addresses 248 – 255 are reserved. The address 250 is used for non-bus (point-to-point) communication to address a slave with unspecified or unknown address (not MODBUS standard).

#### Function Code:

The 8-bit value function code describes the operation that is performed on the slave. Implemented MODBUS functions are described in the following chapter.

### 4.2 Using MODBUS with KELLER products

Both protocols are active. For MODBUS only a subset of the MODBUS functionality is implemented and the implemented MODBUS function codes are not used in the KELLER-protocol. Please note, that the responses are different for both protocols.

Furthermore note that for MODBUS communication NO initialization is required to be performed before any other command.

**Attention:** The Error Check Field byte alignment differs.

|        | Modbus | KELLER-Protocol |
|--------|--------|-----------------|
| CRC-16 | L:H    | H:L             |





### 4.3 Description of MODBUS functions

This section describes the MODBUS functions supported by Series 30 transmitters (device *Class.Group* = 5.20-XX.XX and 5.21-XX.XX)

#### Overview:

- F3: Read registers on MODBUS address space
- F6: Write single register on MODBUS address space
- F8: MODBUS Echo function
- F16: Write multiple registers on MODBUS address space

#### Versions overview

The main difference between firmware 5.20 and 5.21 is, that the buffer size in version 5.21 is larger (100 byte).

The table below gives you an overview which Firmware-version supports which MODBUS functions:

| Version                   | F3 float values<br>0x0000..0x000A | F3 float values<br>0x0100..0x0106 | F3 int<br>16bit values<br>0x0010.. 0x0015 | F3 int<br>32bit values<br>0x0020.. 0x002A | F3<br>Information &<br>Configuration | F6  | F8,<br>F16 | Data<br>buffer<br>size |
|---------------------------|-----------------------------------|-----------------------------------|---|---|--------------------------------------|-----|------------|------------------------|
| 5.20-5.50                 | Yes                               | No                                | Yes                                       | No  | No                                   | No  | No         | 10 byte                |
| 5.20-10.40                | Yes                               | Yes                               | No  | No  | Yes                                  | No  | Yes        | 13 byte                |
| 5.20-12.28                | Yes                               | Yes                               | Yes                                       | Yes                                       | Yes                                  | Yes | Yes        | 13 byte                |
| 5.21-13.10<br>(and later) | Yes                               | Yes                               | Yes                                       | Yes                                       | Yes                                  | Yes | Yes        | 100 byte               |

Note: compatible for all versions to read process values (CH0..TOB2): F3 float, reg 0x0000..0x000A

### 4.4 Modbus Communication Examples

| Read     | address | request             | response                                     | received value             |
|----------|---------|---------------------|--|----------------------------|
| P1       | 1       | 1 3 0 2 0 2 101 203 | 1 3 4 63 117 240 123 227 222                 | 0.960701 bar               |
| P2       | 1       | 1 3 0 4 0 2 133 202 | 1 3 4 63 118 6 224 21 213                    | 0.961042 bar               |
| TOB1     | 1       | 1 3 0 8 0 2 69 201  | 1 3 4 65 181 192 121 110 11                  | 22.719 °C                  |
| P1, TOB1 | 1       | 1 3 1 0 0 4 69 245  | 1 3 8 63 117 227 210 65 182<br>28 32 160 119 | 0.960508 bar<br>22.7637 °C |

### 4.5 Function 3: MODBUS Register Read

Read a number of subsequent registers in the MODBUS address space starting with StAdd. Note, that the data returned has to be interpreted according the definitions in "4.9 MODBUS Register Map".

- Function is implemented in devices *Class.Group-version* = 5.20-2.40 and later and 5.21-XX.XX.
- The maximal number of registers read in one cycle is limited to:  
up to 4 registers for versions *Class.Group-version* = 5.20-10.40 and later  
up to 80 registers for versions *Class.Group-version* = 5.21-XX.XX  
up to 2 registers for earlier versions than *Class.Group-version* = 5.20-10.40
- Byte-count of the answer will be an even number (1 register = 2 bytes)
- Double sized process values (CH0, P1, P2, T, TOB1 and TOB2) must be read in one request.
- Returns NaN (float) or ovl (integer) in case of a inactive channel or a error in the channel

#### Request:

|         |      |         |         |         |         |         |         |
|---------|------|---------|---------|---------|---------|---------|---------|
| DevAddr | 0x03 | StAdd H | StAdd L | # Reg H | # Reg L | CRC16_L | CRC16_H |
|---------|------|---------|---------|---------|---------|---------|---------|

#### Response:

|         |      |         |        |        |     |        |         |         |
|---------|------|---------|--------|--------|-----|--------|---------|---------|
| DevAddr | 0x03 | # Bytes | Data H | Data L | ... | Data L | CRC16_L | CRC16_H |
|---------|------|---------|--------|--------|-----|--------|---------|---------|

#### Error:

|         |      |       |         |         |
|---------|------|-------|---------|---------|
| DevAddr | 0x83 | Error | CRC16_L | CRC16_H |
|---------|------|-------|---------|---------|

Error codes:

- 2 Illegal data address:**
  - Wrong starting-address or wrong number of registers
  - Start-address not defined, register exceeding defined range return 0x0000



### 3 **Illegal data value:**

- Quantity of requested registers out of bound
- Must be <= 4 for devices *Class.Group-version = 5.20-10.XX* and later
- Must be <= 80 for devices *Class.Group-version = 5.21-XX.XX*
- Must be <= 2 for devices *Class.Group-version = 5.20-2.50*

## 4.6 **Function 6: MODBUS Single Register Write**

This function has the same functionality as F16, but writes only 1 register.

- Function is implemented in devices *Class.Group-version = 5.20-12.XX and later and 5.21-XX.XX*
- A register contains 2 bytes (16 bit).
- Use this function for single configuration steps, because the returned error is easily distinguishable from other register writes.
- Note that single register operations are not allowed in the address ranges 0x03XX and 0xFFXX.

### **Request:**

|         |      |         |         |        |        |         |         |
|---------|------|---------|---------|--------|--------|---------|---------|
| DevAddr | 0x06 | StAdd H | StAdd L | Data H | Data L | CRC16_L | CRC16_H |
|---------|------|---------|---------|--------|--------|---------|---------|

### **Response:**

|         |      |         |         |        |        |         |         |
|---------|------|---------|---------|--------|--------|---------|---------|
| DevAddr | 0x06 | StAdd H | StAdd L | Data H | Data L | CRC16_L | CRC16_H |
|---------|------|---------|---------|--------|--------|---------|---------|

### **Error:**

|         |      |       |         |         |
|---------|------|-------|---------|---------|
| DevAddr | 0x86 | Error | CRC16_L | CRC16_H |
|---------|------|-------|---------|---------|

Error codes:

- 2 Illegal data address**
  - address not accessible by function 6
  - Start-address not defined (for writing)
- 3 Illegal data value**
  - frame length incorrect
- 4 Slave Device Failure**
  - Attempted to write into a protected register
  - The data written is outside the defined data range

## 4.7 **Function 8: MODBUS Echo Test**

This function may be used to perform a quick line check. It just returns the data received.

- Function is implemented in devices *Class.Group-version = 5.20-10.XX and later and 5.21-XX.XX*
- Data may be any 2 byte value

### **Request:**

|         |      |      |      |        |        |         |         |
|---------|------|------|------|--------|--------|---------|---------|
| DevAddr | 0x08 | 0x00 | 0x00 | Data H | Data L | CRC16_L | CRC16_H |
|---------|------|------|------|--------|--------|---------|---------|

### **Response:**

|         |      |      |      |        |        |         |         |
|---------|------|------|------|--------|--------|---------|---------|
| DevAddr | 0x08 | 0x00 | 0x00 | Data H | Data L | CRC16_L | CRC16_H |
|---------|------|------|------|--------|--------|---------|---------|

### **Error:**

|         |      |       |         |         |
|---------|------|-------|---------|---------|
| DevAddr | 0x88 | Error | CRC16_L | CRC16_H |
|---------|------|-------|---------|---------|

Error codes:

- 1 Illegal subfunction code:**
  - The subfunction code is not supported (it is not (0x00, 0x00)). *Class.Group-version = 5.21-XX.XX only*
- 3 Illegal data value:**
  - The data following the function code was not the fixed data (0x00, 0x00). *Class.Group-version = 5.20-10.XX and later*



#### 4.8 Function 16: MODBUS Register WRITE

Write a number of subsequent registers on the MODBUS address space starting with StAdd.

- Function is implemented in devices *Class.Group-version = 5.20-10.XX and later and 5.21-XX.XX*
- A register contains 2 bytes (16 bit).
- The number of registers written in one cycle is limited to 2 (0x02) for *Class.Group-version = 5.20-10.XX*
- The number of registers written in one cycle is limited to 40 (0x28) for *Class.Group-version = 5.21-XX.XX*
- Byte-count of the answer will be an even number (1 register = 2 bytes).
- Addresses above 0xFF00 are virtual command registers that simply execute a task on the slave. Please refer to chapter "4.9 MODBUS Register Map" for more information.
- Writing float values (0x03XX and 0xFFXX) always requires 2 data registers.
- #Reg in the response declares the number of actually written registers (in case an error occurs, this amount is not the same as in the request)

##### Request:

|         |        |         |         |         |         |         |        |        |
|---------|--------|---------|---------|---------|---------|---------|--------|--------|
| DevAddr | 0x10   | StAdd H | StAdd L | # Reg H | # Reg L | # Bytes | Data H | Data L |
| ...     | Data H | Data L  | CRC16 L | CRC16 H |         |         |        |        |

##### Response:

|         |      |         |         |         |         |         |         |
|---------|------|---------|---------|---------|---------|---------|---------|
| DevAddr | 0x10 | StAdd H | StAdd L | # Reg H | # Reg L | CRC16_L | CRC16_H |
|---------|------|---------|---------|---------|---------|---------|---------|

##### Error:

|         |      |       |         |         |
|---------|------|-------|---------|---------|
| DevAddr | 0x90 | Error | CRC16_L | CRC16_H |
|---------|------|-------|---------|---------|

Error codes:

- 2 Illegal data address:**
  - Undefined starting-address or wrong number of registers
  - Start-address not defined (for writing)
- 3 Illegal data value:**
  - The amount of data is out of bound
  - Byte-Count is not twice the # Reg.
- 4 Slave Device Failure:**
  - Attempted to write into a protected register
  - The data written is outside the defined data range



## 4.9 MODBUS Register Map

### Process Value Read Range (0x000x) 32bit floating point:

- compatible with *Class.Group-version = 5.20-5.50 and later and 5.21-XX.XX*
- A Channel must be read in one cycle. Odd start address (StAdd) returns exception2
- format is float according to chapter "6.2 Floating-point format IEEE754",  
5.20-5.50: 2Registers. Errors: Inactive Channel returns exception2, ovl or uvl returns exception3  
5.20-10.40 and later and 5.21-XX.XX: 2 or 4 Registers. Errors: Inactive Channel returns NaN, over-/underflow is represented by +/-infinity
- corresponding functionality to Keller Bus functions F73

| MODBUS StAdd (0xHILO) | Channel | Read/Write | Unit | Description                                       |
|-----------------------|---------|------------|------|---|
| 0x0000                | CH0     | R          | ---  | Calculated value (customer specific format) HWord |
|                       |         |            |      | Calculated value (customer specific format) LWord |
| 0x0002                | P1      | R          | bar  | Pressure of sensor1 HWord                         |
|                       |         |            |      | Pressure of sensor1 LWord                         |
| 0x0004                | P2      | R          | bar  | Pressure of sensor2 HWord                         |
|                       |         |            |      | Pressure of sensor2 LWord                         |
| 0x0006                | T       | R          | °C   | Temperature HWord                                 |
|                       |         |            |      | Temperature LWord                                 |
| 0x0008                | TOB1    | R          | °C   | Temperature of sensor1 HWord                      |
|                       |         |            |      | Temperature of sensor1 LWord                      |
| 0x000A                | TOB2    | R          | °C   | Temperature of sensor2 HWord                      |
|                       |         |            |      | Temperature of sensor2 LWord                      |

### Process Value Read Range (0x001x) 16bit integer:

- compatible with *Class.Group-version = 5.20-5.50 and later and 5.21-XX.XX*, but not 5.20-10.40
- format is 2 byte signed integer
- All Values are multiplied by 100. Numeric range: +/- 32700, max. pressure +/- 327bar.  
Use 32bit Register for higher resolution and range.
- Amount of Registers: 5.20-5.50: 1Reg, *version 5.20-12.28 and later and 5.21-XX.XX*: 1 .. 4Reg.

| MODBUS StAdd (0xHILO) | Channel | Read/Write | Unit      | Description                                 |
|-----------------------|---------|------------|-----------|---|
| 0x0010                | CH0     | R          | 1/100 --  | Calculated value (customer specific format) |
| 0x0011                | P1      | R          | 1/100 bar | Pressure of sensor1                         |
| 0x0012                | P2      | R          | 1/100 bar | Pressure of sensor2                         |
| 0x0013                | T       | R          | 1/100 °C  | Temperature                                 |
| 0x0014                | TOB1    | R          | 1/100 °C  | Temperature of sensor1                      |
| 0x0015                | TOB2    | R          | 1/100 °C  | Temperature of sensor2                      |

#### Error-Handling:

Channel not active or error (NaN): value = 32767 (*version 5.50*: exception2)

Overflow or value > 327.0 : value = 32767 (*version 5.50*:exception 3)

Underflow or value < -327.0: value = -32768 (*version 5.50*: exception3)



**Process Value Read Range (0x002x) 32bit integer:**

- compatible with *Class.Group-version = 5.20-12.28 and later and 5.21-XX.XX*
- A Channel must be read in one cycle. Odd start address (StAdd) returns exception2
- format is 4 byte signed integer
- Overflow returns “2147483647”, an underflow “-2147483648”
- Error in a Channel or Channel not active returns “2147483647”
- corresponding functionality to Keller Bus functions F74

| MODBUS StAdd (0xHILO) | Channel | Read/Write | Unit                      | Description                                       |
|-----------------------|---------|------------|---------------------------|---|
| 0x0020                | CH0     | R          | 10 <sup>-5</sup> ---      | Calculated value (customer specific format) HWord |
|                       |         |            |                           | Calculated value (customer specific format) LWord |
| 0x0022                | P1      | R          | Pa (10 <sup>-5</sup> bar) | Pressure of sensor1 HWord                         |
|                       |         |            |                           | Pressure of sensor1 LWord                         |
| 0x0024                | P2      | R          | Pa (10 <sup>-5</sup> bar) | Pressure of sensor2 HWord                         |
|                       |         |            |                           | Pressure of sensor2 LWord                         |
| 0x0026                | T       | R          | 1/100 °C                  | Temperature HWord                                 |
|                       |         |            |                           | Temperature LWord                                 |
| 0x0028                | TOB1    | R          | 1/100 °C                  | Temperature of sensor1 HWord                      |
|                       |         |            |                           | Temperature of sensor1 LWord                      |
| 0x002A                | TOB2    | R          | 1/100 °C                  | Temperature of sensor2 HWord                      |
|                       |         |            |                           | Temperature of sensor2 LWord                      |

Remark: Pressure unit is Pascal (10<sup>-5</sup> bar) instead of bar

**Process Value Read Range (0x0100) 32bit floating point:**

- compatible with *Class.Group-version = 5.20-10.XX and later and 5.21-XX.XX*
- Same as 0x0000 .. 0x000B but different mapping for accessing data in one cycle (e.g. P1 and TOB1)

| MODBUS StAdd (0xHILO) | Channel | Read/Write | Unit  | Description   |
|-----------------------|---------|------------|-------|---|
| 0x0100                | P1      | R          | bar   | Pressure of sensor1 [bar] HWord   |
|                       |         |            |       | Pressure of sensor1 [bar] LWord   |
| 0x0102                | TOB1    | R          | °C    | Temperature of sensor1 [°C] HWord   |
|                       |         |            |       | Temperature of sensor1 [°C] LWord   |
| 0x0104                | P2      | R          | bar   | Pressure of sensor2 [bar] HWord   |
|                       |         |            |       | Pressure of sensor2 [bar] LWord   |
| 0x0106                | TOB2    | R          | °C    | Temperature of sensor2 [°C] HWord   |
|                       |         |            |       | Temperature of sensor2 [°C] LWord   |
| 0x0108                | P1      | R          | bar   | Pressure of sensor1 [bar] HWord <i>version 5.21-XX.XX only</i>                    |
|                       |         |            |       | Pressure of sensor1 [bar] LWord <i>version 5.21-XX.XX only</i>                    |
| 0x010A                | T       | R          | °C    | Temperature [°C] Hword <i>version 5.21-XX.XX only</i>                             |
|                       |         |            |       | Temperature [°C] Lword <i>version 5.21-XX.XX only</i>                             |
| 0x010C                | LF      | R          | mS/cm | Conductivity Temperature Compensated [mS/cm] HWord <i>version 5.21-XX.XX only</i> |
|                       |         |            |       | Conductivity Temperature Compensated [mS/cm] LWord <i>version 5.21-XX.XX only</i> |



### Device Configuration Range (0x02xx):

- compatible with *Class.Group-version = 5.20-10.XX and later and 5.21-XX.XX*
- all registers contain 16 bit [15..8][7..0] (1 register), high byte = 0x00 if not specified differently
- corresponding functionality to Keller Bus functions F32, F33, F66 and F69

| MODBUS StAdd (0xHILO) | Read/Write | Reg. Name                  | DESCRIPTION  |
|-----------------------|------------|----------------------------|--|
| 0x0200                | R/W        | UART                       | UART settings:<br>Bit 0 .. 3: Baud rate<br>Baud rate Value = 0: 9'600baud<br>Baud rate Value = 1: 115'200baud<br>Bit 4: Parity selection. 0: no Parity, 1: Parity enable<br>Bit 5: Parity mode. 0: odd parity, 1: even parity<br>Bit 6: Stop bit. 0: 1 stop bit, 1: 2 stop bit <i>version 5.21-XX.XX only</i>  |
| 0x0201                | R          | FILTER_ORG                 | Factory setting for filter value. <i>version 5.20-XX.XX only</i>   |
| 0x0202                | R          | S/N-H                      | Serial Number High Bytes (16bit)   |
| 0x0203                | R          | S/N-L                      | Serial Number Low Bytes (16Bit)  |
| 0x0204                | R          | CFG_P                      | Active pressure channels (high priority): Bit 1: P1, Bit 2: P2   |
| 0x0205                | R          | CFG_T                      | Active temperature channels (low priority):<br>Bit 3: T (Temperature sensor)<br>Bit 4: TOB1 (Temperature of pressure sensor P1)<br>Bit 5: TOB2 (Temperature of pressure sensor P2)<br>Bit 7 Con (Conductivity sensor) <i>version 5.21-XX.XX only</i>   |
| 0x0206                | R/W        | CFG_CH0                    | <i>version 5.20-XX.XX only</i><br>CH0 (Calculated channel): Byte value (decimal): Device has to be restarted after change.<br>0: inactive<br>1: Difference P1 – P2<br>2: Difference P2 – P1<br>3: Square root calculation sqrt(P1)<br>4: Square root calculation sqrt(P2)<br>5: Square root calculation sqrt(P1 – P2)<br>6: Square root calculation sqrt(P2 – P1)<br>11: Absolute value =  P1 <br>12: Absolute value =  P1 – P2 <br>13: Line pressure compensated differential pressure (only at factory, add. parameters)<br>14: straight line curve fitting of P1 (only if P2 is not active, 5.20-12.24 and earlier) |
| 0x0207                | R/W        | CNT_T                      | Temperature measurement interval in seconds. <i>version 5.20-XX.XX only</i>  |
| 0x0208                | R/W        | CNT_TCOMP<br><br>LP_FILTER | Value of Bit 3 ... 0 ( <b>LowNibble</b> ): CNT_TCOMP <i>version 5.20-XX.XX only</i><br>After CNT_T * CNT_TCOMP seconds a temperature compensation will be performed.<br>Value of Bit 7 ... 4 ( <b>HighNibble</b> ):<br>Low pass filter for P1 and P2. <i>LowpassFilter</i> = [B7 ..B4]<br>The formula for the low pass filter is given as:<br>$P_{n+1} = \frac{(2^{LowpassFilter} - 1) * P_{n-1} + P_n}{2^{LowpassFilter}}$<br>where:<br>P <sub>n+1</sub> : new filtered value, P <sub>n</sub> : actual measured value, P <sub>n-1</sub> : old filtered value  |
| 0x0209                | R          | P-Mode                     | <i>version 5.20-12.28 and later and 5.21-XX.XX</i> : Type of sensor and calibration<br>Bit 3 ... 0 ( <b>LowNibble</b> ) P1:0: PR (relative), 1: PA (absolute), 2: PAA (absolute).<br>Bit 7 ... 4 ( <b>HighNibble</b> ) P2:0: PR (relative), 1: PA (absolute), 2: PAA (absolute).<br>Earlier version: Not used (return 0x0000)  |
| 0x020A                | R/W        | FILT_CTRL                  | Filter setting for one conversion:<br>Bit 0: Adaptive filter for P1 and P2 (on / off)<br>Bit 1: Low pass filter for T, TOB1 and TOB2 (on / off)<br>Bit 2 .. Bit 4: Over sampling ration OSR = 2^(8+Bit 2 ... 4) <i>version 5.20-XX.XX only</i><br>Bit 5 .. 6: Amount of samples per averaging: 0 ..3 = 1, 2, 4 or 8 values. <i>version 5.20-XX.XX only</i><br>Factory settings see FILTER_ORG. <i>version 5.20-XX.XX only</i>  |
| 0x020B                | R          | DAC_CTRL                   | <i>version 5.20-XX.XX only</i><br>Analogue output:<br>Bit 0: Milli Amperes output (4 .. 20mA)<br>Bit 1: Voltage output<br>Bit 4 = 1: P1 is linked to the analogue output<br>Bit 4 = 0: CH0 is linked to the analogue output  |



|                 |     |                  |  |
|-----------------|-----|------------------|--|
| 0x020C          | R   | STATUS           | Status, the same as the STAT byte from F73.  |
| 0x020D          | R/W | DEV_ADDR         | Device Address   |
| 0x020E          | R   | Class:Group      | Firmware-version, 16Bit ( <i>only version 5.20-12.28 and later and 5.21-XX.XX</i> )  |
| 0x020F          | R   | Year:Week        | Firmware-version, 16Bit ( <i>only version 5.20-12.28 and later and 5.21-XX.XX</i> )  |
| 0x0211          | R/W | ConOn            | <i>version 5.21-XX.XX only</i><br>0x01: Conductivity powered<br>0x00: Conductivity unpowered   |
| 0x0212          | R   | STATUS           | Not used   |
| 0x0213          | R/W | ConRange         | <i>version 5.21-XX.XX only</i><br>0x01: Conductivity Range 1: 0...200uS (0.2mS)<br>0x02: Conductivity Range 2: 0...2'000uS (2mS)<br>0x03: Conductivity Range 3: 0...20'000uS (20mS)<br>0x04: Conductivity Range 4: 0...200'000uS (200mS)                   |
| 0x0214          | R/W | ConTempCompCoeff | Conductivity Temperature Compensation Method after DIN/EN 27888 <i>version 5.21-XX.XX only</i><br>0x01: Linear Temperature Compensation @ 25°C<br>0x02: Linear Temperature Compensation @ 20°C<br>0x03: Non-linear Temperature Compensation (Table) @ 25°C |
| 0x223           | R/W | SPS              | Samples per Second: <i>version 5.21-XX.XX only</i><br>5: 120 SpS<br>6: 240 SpS<br>7: 480 SpS   |
| 0x0250 – 0x0257 | R   | ASCII Serial Nb  | 16 byte serial number in ASCII (option) <i>version 5.21-XX.XX only</i>   |

#### Device Coefficient Range (0x03xx):

- compatible with *Class.Group-version = 5.20-10.XX and later and 5.21-XX.XX*
- address is calculated by  $(0x0300 + 2 * \{Coeff-No.\})$ .  $\{Coeff-No.\}$  is defined in Function 30.
- read only an even number of registers
- format is float according to chapter “6.2 Floating-point format IEEE754”
- Writing only allowed with F16 (write cycle with 2 registers)
- corresponding functionality to Keller Bus functions F30 and F31

| MODBUS StAdd (0xHILO) | Read/Write | Coeff-No. | Unit  | DESCRIPTION   |
|-----------------------|------------|-----------|-------|---|
| 0x036A                | R/W        | 53        | bar   | Threshold value of the root function ( must be > 0 if sqrt function is used )<br><i>version 5.20-XX.XX only</i> |
| 0x0380                | R/W        | 64        | bar   | Offset of pressure sensor P1, default = 0.0   |
| 0x0382                | R/W        | 65        |       | Gain factor of pressure sensor P1, default = 1.0  |
| 0x0384                | R/W        | 66        | bar   | Offset of pressure sensor P2, default = 0.0   |
| 0x0386                | R/W        | 67        |       | Gain factor of pressure sensor P2, default = 1.0  |
| 0x0388                | R/W        | 68        |       | Offset of analogue output <i>version 5.20-XX.XX only</i>  |
| 0x038A                | R/W        | 69        |       | Gain factor of analogue output <i>version 5.20-XX.XX only</i>   |
| 0x038C                | R/W        | 70        |       | Offset of CH0, default = 0.0  |
| 0x038E                | R/W        | 71        |       | Gain factor of CH0, default = 1.0   |
| 0x0390                | R/W        | 72        | °C    | Offset of temperature T <i>version 5.21-XX.XX only</i>  |
| 0x0394                | R/W        | 74        | °C    | Offset of temperature TOB1 <i>version 5.21-XX.XX only</i>   |
| 0x0398                | R/W        | 76        | °C    | Offset of temperature TOB2 <i>version 5.21-XX.XX only</i>   |
| 0x03A0                | R          | 80        | bar   | Minimum pressure of sensor P1   |
| 0x03A2                | R          | 81        | bar   | Maximum pressure of sensor P1   |
| 0x03A4                | R          | 82        | bar   | Minimum pressure of sensor P2   |
| 0x03A6                | R          | 83        | bar   | Maximum pressure of sensor P2   |
| 0x03A8                | R          | 84        | °C    | Minimum temperature of temperature sensor   |
| 0x03AA                | R          | 85        | °C    | Maximum temperature of temperature sensor   |
| 0x03AC                | R          | 86        | °C    | Minimum temperature of sensor P1  |
| 0x03AE                | R          | 87        | °C    | Maximum temperature of sensor P1  |
| 0x03B0                | R          | 88        | °C    | Minimum temperature of sensor P2  |
| 0x03B2                | R          | 89        | °C    | Maximum temperature of sensor P2  |
| 0x03B4                | R          | 90        |       | Minimum value of channel CH0  |
| 0x03B6                | R          | 91        |       | Maximum value of channel CH0  |
| 0x03B8                | R          | 92        | bar   | Pressure for minimum analogue signal * <i>version 5.20-XX.XX only</i>   |
| 0x03BA                | R          | 93        | bar   | Pressure for maximum analogue signal * <i>version 5.20-XX.XX only</i>   |
| 0x03B8                | R/W        | 92        | bar   | Pressure for minimum frequency signal <i>version 5.21-XX.XX only</i>  |
| 0x03BA                | R/W        | 93        | bar   | Pressure for maximum frequency signal <i>version 5.21-XX.XX only</i>  |
| 0x03BC                | R          | 94        | mA, V | Minimum analogue signal*, ** <i>version 5.20-XX.XX only</i>   |



|        |     |     |       |   |
|--------|-----|-----|-------|---|
| 0x03BE | R   | 95  | mA, V | Maximum analogue signal*,** <i>version 5.20-XX.XX only</i>                                  |
| 0x03E0 | R/W | 121 | float | Gain Conductivity Range 1 <i>version 5.21-XX.XX only</i>                                    |
| 0x03E2 | R/W | 122 | float | Gain Conductivity Range 2 <i>version 5.21-XX.XX only</i>                                    |
| 0x03E4 | R/W | 123 | float | Gain Conductivity Range 3 <i>version 5.21-XX.XX only</i>                                    |
| 0x03E6 | R/W | 124 | float | Gain Conductivity Range 4 <i>version 5.21-XX.XX only</i>                                    |
| 0x03E8 |     |     |       | Not used  |
| 0x03EA | R/W | 126 | float | Conductivity Temperature Coefficient (default 0.022-> water) <i>version 5.21-XX.XX only</i> |
| 0x03EC | R/W | 127 | float | Conductivity Cell Constant (default 1.00) <i>version 5.21-XX.XX only</i>                    |
| 0xFFD0 | R   | -   | U32   | Hardware Id   |

\* Required for scaling the analogue output (see below)

\*\*The information for No. 94 and No. 95 may be in mA or V, according to whether the device possesses a voltage output or a current output (see DAC\_CTRL).





#### 4.10 Device Operation Command List

- compatible with *Class.Group-version = 5.20-10.XX and later and 5.21-XX.XX*
- Writing only allowed with F16 (write cycle with 2 registers)
- Only one command per request
- This address range is NOT readable
- corresponding functionality to Keller Bus function F95
- Some bytes of the message are fixed, see following frame layout:

##### Request:

|         |      |         |         |      |      |      |    |    |
|---------|------|---------|---------|------|------|------|----|----|
| DevAddr | 0x10 | StAdd H | StAdd L | 0x00 | 0x02 | 0x04 | B3 | B2 |
| B1      | B0   | CRC16 L | CRC16 H |      |      |      |    |    |

##### Response:

|         |      |         |         |      |      |         |         |
|---------|------|---------|---------|------|------|---------|---------|
| DevAddr | 0x10 | StAdd H | StAdd L | 0x00 | 0x02 | CRC16_L | CRC16_H |
|---------|------|---------|---------|------|------|---------|---------|

| MODBUS StAdd (0xHILO) | Read/Write | Reg. Name       | DESCRIPTION  |
|-----------------------|------------|-----------------|--|
| 0xFF00                | W          | Set Zero P1     | The zero point value from P1 (Coeff-No. 64) is calculated, that the current measured value equals the floating point number specified.                   |
| 0xFF02                | W          | Reset Zero P1   | Zero Point Value from P1 is set to default (Coeff-No. 64 = 0.0)  |
| 0xFF04                | W          | Set Zero P2     | The zero point value from P2 (Coeff-No. 66) is calculated, that the current measured value equals the floating point number specified.                   |
| 0xFF06                | W          | Reset Zero P2   | Zero Point Value from P2 is set to default (Coeff-No. 66 = 0.0)  |
| 0xFF08                | -          | -               |  |
| 0xFF0A                | -          | -               |  |
| 0xFF0C                | W          | Set Zero CH0    | The zero point value from CH0 (Coeff-No. 70) is calculated, that the current measured value equals the floating point number specified.                  |
| 0xFF0E                | W          | Reset Zero CH0  | Zero Point Value from CH0 is set to default (Coeff-No. 70 = 0.0)   |
| 0xFF10                | W          | Set Zero T      | The zero point value from T is calculated, that the current measured value equals the floating point number specified. <i>version 5.21-XX.XX only</i>    |
| 0xFF12                | W          | Reset Zero T    | Zero Point Value from T is set to default (Coeff-No. 72 = 0.0) <i>version 5.21-XX.XX only</i>  |
| 0xFF14                | W          | Set Zero TOB1   | The zero point value from TOB1 is calculated, that the current measured value equals the floating point number specified. <i>version 5.21-XX.XX only</i> |
| 0xFF16                | W          | Reset Zero TOB1 | Zero Point Value from TOB1 is set to default (Coeff-No. 74 = 0.0) <i>version 5.21-XX.XX only</i>   |
| 0xFF18                | W          | Set Zero TOB2   | The zero point value from TOB2 is calculated, that the current measured value equals the floating point number specified. <i>version 5.21-XX.XX only</i> |
| 0xFF1A                | W          | Reset Zero TOB2 | Zero Point Value from TOB2 is set to default (Coeff-No. 76 = 0.0) <i>version 5.21-XX.XX only</i>   |



## 5 Description of Keller bus functions

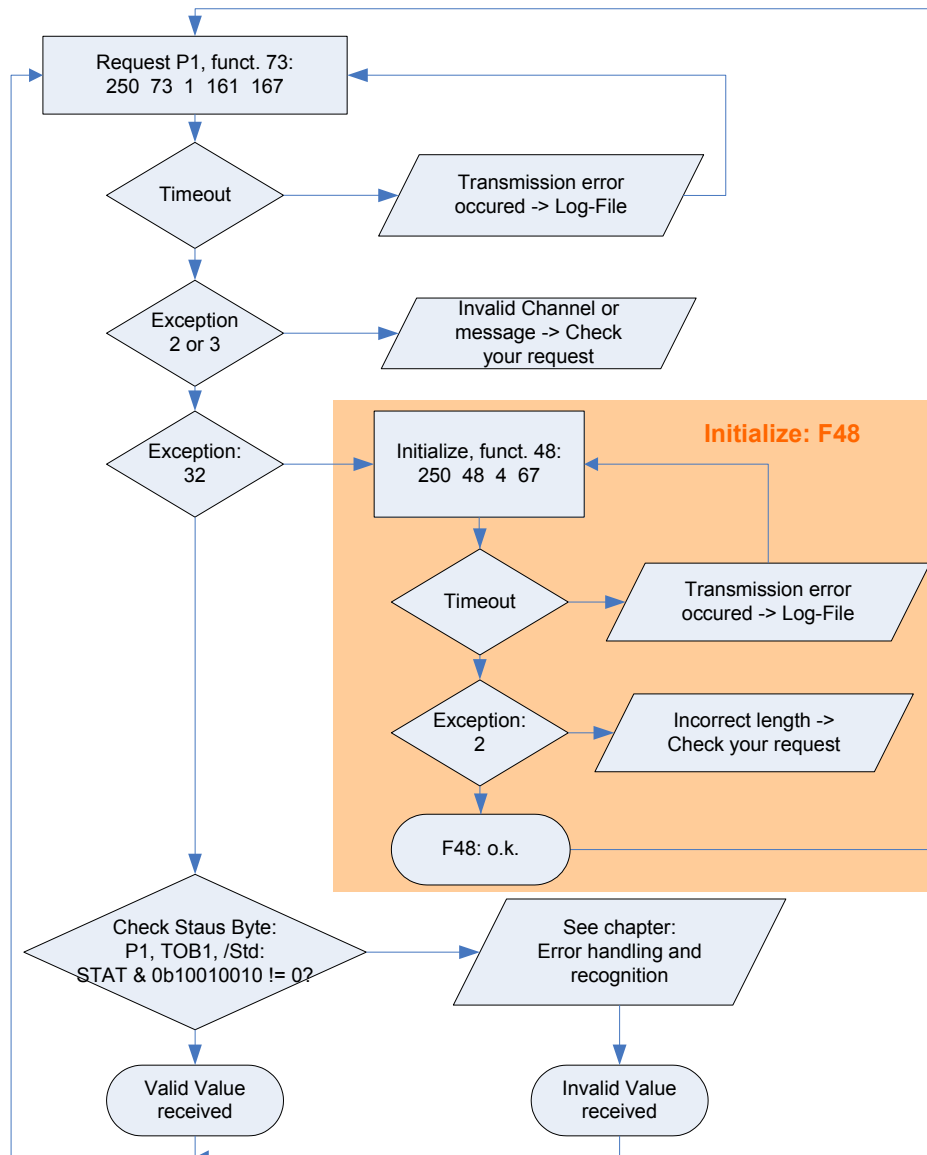
This section describes the functions of the bus protocol for Series 30 transmitters (device *Class.Group* 5.20-XX.XX and 5.21-XX.XX) using the Keller bus functions (not MODBUS).

**Note that all numbers are shown as decimal** (not as hex, contradictory to what was described in the MODBUS-chapters)!

### Overview:

- F30: Read out calibration (scaling) and information floating-point values
- F31: Write calibration floating-point values
- F32: Read out configurations
- F33: Write configurations
- F48: Initialise devices, whereby the device ID is returned**
- F66: Write bus address
- F69: Read out serial number
- F73: Read out current pressure and temperature values in floating-point format**
- F74: Read out current pressure and temperature values in integer format
- F95: Zeroing functions

### 5.1 Example: read pressure value with exception handling



A simple example for reading out a pressure value. Because only one transmitter is connected, the „transparent“ address 250 is used. To read out pressure functions 73 and 48 are necessary. When the slave replies with error no. 32 (device just recently started up, power on), then this has to be confirmed with function 48. This is helpful to detect current supply interruptions (on the power supply circuit).

#### Enhancement:

During start-up the device group can be checked via function F48 to ensure that this version is supported.

Further information is available:

- F30: pressure and temperature range
- F69 serial number



Some examples:

|            | address | request          | response                      | received value  |
|------------|---------|------------------|-------------------------------|---|
| Read P1    | 250     | 250 73 1 161 167 | 250 73 63 109 186 172 0 26 27 | 0.9286296 bar   |
|            | 1       | 1 73 1 80 214    | 1 73 63 109 177 83 0 231 97   | 0.9284870 bar   |
| Read P2    | 1       | 1 73 2 81 150    | 1 73 63 109 178 242 0 119 232 | 0.9285117 bar   |
| Read TOB1  | 250     | 250 73 4 162 103 | 250 73 65 201 184 0 0 224 204 | 25.21484 °C   |
|            | 1       | 1 73 4 83 22     | 1 73 65 202 81 128 0 95 54    | 25.28979 °C   |
| Initialize | 1       | 1 48 52 0        | 1 48 5 20                     | FW=5.20-5.50,<br>Buffer=10, device<br>already initialized |
|            |         | 1 48 52 0        | 1 48 5 21                     |   |

## 5.2 Function 30: Read coefficient

**Request:**

|         |    |     |         |         |
|---------|----|-----|---------|---------|
| DevAddr | 30 | Nr. | CRC16_H | CRC16_L |
|---------|----|-----|---------|---------|

**Response:**

|         |    |    |    |    |    |         |         |
|---------|----|----|----|----|----|---------|---------|
| DevAddr | 30 | B3 | B2 | B1 | B0 | CRC16_H | CRC16_L |
|---------|----|----|----|----|----|---------|---------|

**Exception errors:**

- 2 if no. > 111
- 3 if message length incorrect
- 32 if device is not yet initialised

**Note:**

Every coefficient can be read in IEEE754 format (floating-point format 4-byte B0 .. B3) via this function.  
→ Information on IEEE754: see appendix.

### 5.2.1 Calibration values

| No.        | Read / Write | Description of coefficient   | Unit |
|------------|--------------|--|------|
| 53         | R/W          | Threshold value of the roof function, (must be >0 if sqrt is used) version 5.20-XX.XX only | bar  |
| 64         | R/W          | Offset of pressure sensor P1, default 0.0  | bar  |
| 65         | R/W          | Gain factor of pressure sensor P1, default 1.0   |      |
| 66         | R/W          | Offset of pressure sensor P2, default 0.0  | bar  |
| 67         | R/W          | Gain factor of pressure sensor P2, default 1.0   |      |
| 68         | R/W          | Offset of analogue output  |      |
| 69         | R/W          | Gain factor of analogue output   |      |
| 70         | R/W          | Offset of CH0, default 0.0   |      |
| 71         | R/W          | Gain factor of CH0, default 1.0  |      |
| 72         | R/W          | Offset of temperature sensor T version 5.21-XX.XX only                                     | °C   |
| 74         | R/W          | Offset of temperature sensor TOB1 version 5.21-XX.XX only                                  | °C   |
| 76         | R/W          | Offset of temperature sensor TOB2 version 5.21-XX.XX only                                  | °C   |
| 72         | R/W          | Upper threshold value for switching output 1** version 5.20-XX.XX only                     |      |
| 73         | R/W          | Lower threshold for switching output 1** version 5.20-XX.XX only                           |      |
| 78         | R/W          | Upper threshold value for switching output 2** version 5.20-XX.XX only                     |      |
| 79         | R/W          | Lower threshold for switching output 2** version 5.20-XX.XX only                           |      |
| 121        | R/W          | Gain Conductivity Range 1 version 5.21-XX.XX only  |      |
| 122        | R/W          | Gain Conductivity Range 2 version 5.21-XX.XX only  |      |
| 123        | R/W          | Gain Conductivity Range 3 version 5.21-XX.XX only  |      |
| 124        | R/W          | Gain Conductivity Range 4 version 5.21-XX.XX only  |      |
| 126        | R/W          | Conductivity Temperature Coefficient (default 0.022-> water) version 5.21-XX.XX only       |      |
| 127        | R/W          | Conductivity Cell Constant (default 1.00) version 5.21-XX.XX only                          |      |
| 100... 111 | R/W          | free coefficients for customer use   |      |

\*\* no longer supported for devices 5.20-10.XX and newer.

The calibration values can be read and written.



## 5.2.2 Information values

| No. | Read / Write | Description of the coefficient                                 | Unit   |
|-----|--------------|--|--------|
| 80  | R            | Minimum pressure of sensor P1                                  | bar    |
| 81  | R            | Maximum pressure of sensor P1                                  | bar    |
| 82  | R            | Minimum pressure of sensor P2                                  | bar    |
| 83  | R            | Maximum pressure of sensor P2                                  | bar    |
| 84  | R            | Minimum temperature of temperature sensor                      | °C     |
| 85  | R            | Maximum temperature of temperature sensor                      | °C     |
| 86  | R            | Minimum temperature of sensor P1                               | °C     |
| 87  | R            | Maximum temperature of sensor P1                               | °C     |
| 88  | R            | Minimum temperature of sensor P2                               | °C     |
| 89  | R            | Maximum temperature of sensor P2                               | °C     |
| 90  | R            | Minimum value of channel CH0                                   |        |
| 91  | R            | Maximum value of channel CH0                                   |        |
| 92  | R            | Pressure for minimum analogue signal * version 5.20-XX.XX only | bar    |
| 93  | R            | Pressure for maximum analogue signal * version 5.20-XX.XX only | bar    |
| 94  | R            | Minimum analogue signal* version 5.20-XX.XX only               | mA , V |
| 95  | R            | Maximum analogue signal* version 5.20-XX.XX only               | mA , V |
| 99  | R            | Calibration date: B0:day B1:month B2:B3:year                   |        |
| 120 | R            | Conductivity hardware version and firmware version (C.G/Y.W)   | -      |

\* Required for scaling the analogue output (see below)

The information values are readable only.

The information for No. 94 and 95 may be in mA or V, according to whether the device possesses a voltage output or a current output (see DAC\_CTRL function 33).

## 5.2.3 Scaling of channels CH0, P1 and P2

CH0, P1 and P2 are linearly scalable with zero point and gain factor: **Value = gain factor \* value + offset**

Standard values: Offset = 0.0, gain factor = 1.0

T, TOB1 and TOB2 are only scalable with zero point. Standard value: Offset = 0.0

It is also possible to influence the offset values via function 95 (see function 95).

The gain factor should be used **for calibration purposes only**, and not to alter pressure units. The latter operation should always be carried out by the master! In order to represent other pressure units via the analogue output, the unit conversion must be taken into account when scaling the analogue output.



### 5.2.4 Scaling the analogue output

The analogue output on the Series 30 pressure transmitters can be programmed via the interface. As the two routes *sensor-signal* → *digital transformation and digital value* → *analogue signal* are calibrated independently at the factory, the analogue output can be set to different pressures or pressure units **without** requiring recalibration. For this purpose, KELLER offers the free CCS30 software, which provides a convenient means of carrying out this scaling with a PC.

To programme the scaling of the analogue output yourself, proceed as follows:

Function 32 enables you to ascertain whether the device possesses an analogue output. The coefficients required for calculation can be read out using function 30. A new scaling can be programmed using function 31.

**Read-out** of pressure range for the analogue output:

The following coefficients (K[No.]) must be read out using function 30 in order to calculate the lower and upper limit of the analogue output:

$$A = (K[92] - K[68]) / K[69]$$

$$B = (K[93] - K[68]) / K[69]$$

**Setting** a new pressure range for the analogue output:

K[68] and K[69] must be calculated and written into the device using function 31:

$$K[68] = K[92] - ((K[93] - K[92]) / (B - A)) * A$$

$$K[69] = (K[93] - K[92]) / (B - A)$$

Whereby:

K[x] : Coefficient with the corresponding number [x] → see function 30

A : Pressure in bar at which the signal K[94] is to be output

B : Pressure in bar at which the signal K[95] is to be output

Other pressure units are to be converted into bar.

### 5.3 Function 31: Write coefficient

**Request:**

|         |    |     |    |    |    |    |         |         |
|---------|----|-----|----|----|----|----|---------|---------|
| DevAddr | 31 | Nr. | B3 | B2 | B1 | B0 | CRC16_H | CRC16_L |
|---------|----|-----|----|----|----|----|---------|---------|

**Response:**

|         |    |   |         |         |
|---------|----|---|---------|---------|
| DevAddr | 31 | 0 | CRC16_H | CRC16_L |
|---------|----|---|---------|---------|

**Exception errors:**

- 2 If write access is not allowed
- 3 If message length is incorrect
- 32 If device has not yet been initialised

**Note:**

Information on scaling of the channels: See functions 73 and 95. Information on which channels are active: See function 32 CFG\_P, CFG\_T and CFG\_CH0.



#### 5.4 Function 32: Read configuration

##### Request:

|         |    |     |         |         |
|---------|----|-----|---------|---------|
| DevAddr | 32 | Nr. | CRC16_H | CRC16_L |
|---------|----|-----|---------|---------|

##### Response:

|         |    |       |         |         |
|---------|----|-------|---------|---------|
| DevAddr | 32 | Dates | CRC16_H | CRC16_L |
|---------|----|-------|---------|---------|

##### Exception errors:

- 2 If no. is not available
- 3 If message length is incorrect
- 32 If device has not yet been initialised

##### Remark:

See description function 33

#### 5.5 Function 33: Write configuration

##### Request:

|         |    |     |       |         |         |
|---------|----|-----|-------|---------|---------|
| DevAddr | 33 | Nr. | Dates | CRC16_H | CRC16_L |
|---------|----|-----|-------|---------|---------|

##### Response:

|         |    |   |         |         |
|---------|----|---|---------|---------|
| DevAddr | 33 | 0 | CRC16_H | CRC16_L |
|---------|----|---|---------|---------|

##### Exception errors:

- 2 If write access is not allowed
- 3 If message length is incorrect
- 32 If device has not yet been initialised

##### Remark:

With functions 32 and 33 one can read and write some configuration of the device. This functions provide a single byte access and replace function 100 / 101 for the devices with firmware *Class.Group -Year.Week = 5.20-5.50* und earlier.

##### Description:

| Nr. | Name    | Description  | Read | Write   |
|-----|---------|--|------|---|
| 0   | CFG_P   | Active pressure channels (high priority):<br>Bit 1: P1<br>Bit 2: P2  | ✓    | ✗   |
| 1   | CFG_T   | Active Temperature channels (low priority):<br>Bit 3: T (Temperature sensor)<br>Bit 4: TOB1 (Temperature of pressure sensor P1)<br>Bit 5: TOB2 (Temperature of pressure sensor P2)<br>Bit 7 Con (Conductivity sensor) version 5.21-XX.XX only  | ✓    | ✗   |
| 2   | CFG_CH0 | version 5.20-XX.XX only<br>Configuration of CH0 (Calculated channel): Byte value (decimal)<br>0: inactive<br>1: Difference P1 – P2<br>2: Difference P2 – P1<br>3: Square root calculation $\sqrt{P1}$ , set coefficient Nr. 53 > 0<br>4: Square root calculation $\sqrt{P2}$ , set coefficient Nr. 53 > 0<br>5: Square root calculation $\sqrt{P1 - P2}$ , set coefficient Nr. 53 > 0<br>6: Square root calculation $\sqrt{P2 - P1}$ , set coefficient Nr. 53 > 0<br>11: Absolute value $\text{abs}(P1)$<br>12: Absolute value $\text{abs}(P1 - P2)$<br>13: Line pressure compensated differential pressure (only at factory, add. parameters)<br>14: straight line curve fitting of P1 (only if P2 is not active, 5.20-12.24 and earlier) | ✓    | ✓<br>Device has to be restarted (power Off/On).<br>Please note that for some settings there are more configurations needed. |



|    |                        |   |   |  |
|----|------------------------|---|---|--|
| 3  | CNT_T                  | Temperature measurement interval in seconds. version 5.20-XX.XX only  | ✓ | ✓  |
| 4  | CNT_TCOMP<br>LP-FILTER | Value of Bit 0 ... 3 (LowNibble): CNT_TCOMP version 5.20-XX.XX only<br>After CNT_T * CNT_TCOMP seconds a temperature compensation will be performed.<br>Value of Bit 4 ... 7 (HighNibble): Low pass filter for P1 and P2. $LowpassFilter = 2^{Bit4 \dots B7}$<br>The formula for the low pass filter is given as:<br>$P_{n+1} = \frac{(2^{LowpassFilter} - 1) \cdot P_{n-1} + P_n}{2^{LowpassFilter}}$ where:<br>P <sub>n+1</sub> : new filtered value<br>P <sub>n</sub> : actual measured value<br>P <sub>n-1</sub> : old filtered value | ✓ | ✓  |
| 5  |                        | --  |   |  |
| 6  |                        | --  |   |  |
| 7  | FILTER                 | Filter setting for one conversion:<br>Bit 0: Adaptive filter for P1 and P2 (on / off)<br>Bit 1: Low pass filter for T, TOB1 and TOB2 (on / off)<br>Bit 2.. 4: Over sampling ration $OSR = 2^{(8+Bit2 \dots 4)}$ version 5.20-XX.XX only<br>Bit 5.. 6: Amount of samples per averaging: 0..3 = 1, 2, 4 or 8 values version 5.20-XX.XX only<br>Factory settings see FILTER_ORG. version 5.20-XX.XX only   | ✓ | ✓  |
| 8  |                        | --  |   |  |
| 9  | DAC                    | Analogue output: version 5.20-XX.XX only<br>Bit 0: Milli Amperes output (4 .. 20mA)<br>Bit 1: Voltage output<br>Bit 4 = 1: P1 is linked to the analogue output<br>Bit 4 = 0: CH0 is linked to the analogue output<br>Scaling see function 30/31   | ✓ | ( ✓ : Bit4)<br>5.20-10.40 and earlier. Change of Bit 4 allowed to link the analogue output either to CH0 or P1                     |
| 10 | UART                   | UART settings:<br>Bit 0 .. 3: Baud rate<br>Baud rate Value = 0: 9'600baud<br>Baud rate Value = 1: 115'200baud<br>Bit 4: Parity selection. 0: no Parity, 1: Parity enable<br>Bit 5: Parity mode. 0: odd parity, 1: even parity<br>Bit 6: Stop bit. 0: 1 Stop bit, 1: 2 Stop bits version 5.21-XX.XX only   | ✓ | ✓<br>Device has to be restarted (power Off/On). version 5.20-XX-XX only<br>version 5.21-XX.XX generates a restart -> reinitialised |
| 11 | FILTER_ORG             | Factory setting for filter value. version 5.20-XX.XX only   | ✓ | ✗  |
| 12 | STAT                   | Status of the measurement. See function 73 for details.   | ✓ | ✗  |
| 13 | DEV_ADDR               | Device address. Range: 1 .. 255.  | ✓ | ✓  |
| 14 | P-Mode                 | Type of sensor and calibration. version 5.20-12.XX and later only and 5.21-XX.XX<br>Bit 0 ... 3 (LowNibble) P1: 0: PR (relative), 1: PA (absolute), 2: PAA (absolute)<br>Bit 4 ... 7 (HighNibble) P2: 0: PR (relative), 1: PA (absolute), 2: PAA (absolute)   | ✓ | ✗  |
| 15 | SPS                    | Samples per Second: version 5.21-XX.XX only<br>Range: 5-7<br>5: 120 SPS<br>6: 240 SPS<br>7: 480 SPS   | ✓ | ✓  |
| 20 | SDI-12                 | version 5.21-14.XX and later only<br>Switch to SDI-12 Mode 0x99   | ✗ | ✓  |
| 28 | ConOn                  | version 5.21-XX.XX only<br>0x01: Conductivity powered<br>0x00: Conductivity unpowered   | ✓ | ✓  |
| 31 | ConRange               | version 5.21-XX.XX only<br>0x01: Conductivity Range 1: 0...200uS (0.2mS)<br>0x02: Conductivity Range 2: 0...2'000uS (2mS)<br>0x03: Conductivity Range 3: 0...20'000uS (20mS)<br>0x04: Conductivity Range 4: 0...200'000uS (200mS)   | ✓ | ✓  |
| 32 | ConTempCompMode        | Conductivity Temperature Compensation Method after DIN/EN 27 888 version 5.21-XX.XX only<br>0x01: Linear Temperature Compensation @ 25°C<br>0x02: Linear Temperature Compensation @ 20°C<br>0x03: Non-linear Temperature Compensation (Table)@ 25°C   | ✓ | ✓  |
| 33 | SDI-12_available       | version 5.21-13-35 and 5.21-14.35 and later only  | ✓ | ✗  |



|  |  |  |  |  |
|--|--|--|--|--|
|  |  | 0x01: Switch to SDI-12 possible<br>0x00: SDI-12 Wire not available |  |  |
|--|--|--|--|--|

### 5.6 Function 48 : Initialise and release

#### Request:

|         |    |         |         |
|---------|----|---------|---------|
| DevAddr | 48 | CRC16_H | CRC16_L |
|---------|----|---------|---------|

#### Response:

|         |    |       |       |      |      |     |      |         |         |
|---------|----|-------|-------|------|------|-----|------|---------|---------|
| DevAddr | 48 | Class | Group | Year | Week | BUF | STAT | CRC16_H | CRC16_L |
|---------|----|-------|-------|------|------|-----|------|---------|---------|

#### Exception error:

- 3 If message length is incorrect

#### Note:

Each time the device is switched on by applying the supply voltage or after a break in the power supply, the device must be initialised via this function. Calling a different function will lead to **exception error 32**.

The following information is returned:

|            |  |
|------------|--|
| Class      | Device ID code   |
|            | 5: Series 30 digital pressure transmitter (33, 35, 36, 39)                     |
| Group      | Subdivision within a device class  |
| 1:         | Series 30 transmitter from 1999 or later                                       |
| 20:        | Series 30 transmitter from 2002 or later                                       |
| 21:        | Series 30 transmitter version X2   |
|            | The differences between these devices are defined in italics in the functions. |
| Year, Week | Firmware version   |
| BUF        | Length of the internal receive buffer  |
| STAT       | Status information   |
| 0:         | Device addressed for first time after switching on.                            |
| 1:         | Device was already initialised   |





## 5.7 Function 66 : Write and read new device address

### Request:

|         |    |         |         |         |
|---------|----|---------|---------|---------|
| DevAddr | 66 | NewAddr | CRC16_H | CRC16_L |
|---------|----|---------|---------|---------|

### Response:

|         |    |         |         |         |
|---------|----|---------|---------|---------|
| DevAddr | 66 | ActAddr | CRC16_H | CRC16_L |
|---------|----|---------|---------|---------|

### Exception error:

- 3 If message length is incorrect
- 32 If device is not yet initialised

### Note:

This function programmes the device addresses to NewAddr. The address is returned in ActAddr as confirmation. It is to be ensured that the new address NewAddr is not already in use by another bus user.

Permissible addresses: 1 .. 255. Address 250 is transparent. This means that every device, irrespective of the set address, will respond to address 250. Consequently, *transparent* DevAddr = 250 may only be used in stand-alone operating mode!

For the purpose of **reading the device address** when the address is not known, for example, the value 250 is transferred as DevAddr and the value 0 is transferred as NewAddr. The current address is then returned in response.

## 5.8 Function 69 : Read serial number

### Request:

|         |    |         |         |
|---------|----|---------|---------|
| DevAddr | 69 | CRC16_H | CRC16_L |
|---------|----|---------|---------|

### Response:

|         |    |     |     |     |     |         |         |
|---------|----|-----|-----|-----|-----|---------|---------|
| DevAddr | 69 | SN3 | SN2 | SN1 | SN0 | CRC16_H | CRC16_L |
|---------|----|-----|-----|-----|-----|---------|---------|

### Exception errors:

- 3 If message length is incorrect
- 32 If device is not yet initialised.

### Note:

The serial number is allocated at the factory. It consists of 4 bytes unsigned integer and is calculated as follows:

$$SN = 256^3 * SN3 + 256^2 * SN2 + 256 * SN1 + SN0$$



## 5.9 Function 73 : Read value of a channel (floating point)

### Request:

|         |    |    |         |         |
|---------|----|----|---------|---------|
| DevAddr | 73 | CH | CRC16_H | CRC16_L |
|---------|----|----|---------|---------|

### Response:

|         |    |    |    |    |    |      |         |         |
|---------|----|----|----|----|----|------|---------|---------|
| DevAddr | 73 | B3 | B2 | B1 | B0 | STAT | CRC16_H | CRC16_L |
|---------|----|----|----|----|----|------|---------|---------|

### Exception errors:

- 2** If CH > 5 version 5.20-XX.XX and if CH > 11 version 5.21-XX.XX
- 3** If message length is incorrect
- 32** If device is not yet initialised

### Note:

A device can measure up to five signals (channels):

version 5.20-XX.XX: Two independent pressure sensors P1 and P2, as well as the temperatures of pressure sensors TOB1 and TOB2 and an additional temperature sensor T. The temperatures of the pressure sensors (TOB1, TOB2) are required for temperature compensation of the pressure signal.

version 5.21-XX.XX: One pressure sensor P1, as well as the temperatures of pressure sensors TOB1 and an additional temperature sensor T. Optional a conductivity sensor is available and ConTC and ConRaw can be measured as well. The temperature of the pressure sensor (TOB1) is required for temperature compensation of the pressure signal.

Please use function 32 to get the information which Channels are active.

CH0 is a calculated channel whose mode of functioning is defined in function 32 / 33.

On a standard pressure transmitter, only channels P1 and TOB1 are available. You can read out which channels are active via function 32.

The measured value is returned in IEEE754 format (4-byte B0 ... B3).

| CH | Name   | Description   | Unit  |
|----|--------|---|-------|
| 0  | CH0    | Calculated channel (see function 32,33 version 5.20-XX.XX only) | *     |
| 1  | P1     | Pressure from pressure sensor 1                                 | bar   |
| 2  | P2     | Pressure from pressure sensor 2                                 | bar   |
| 3  | T      | Additional temperature sensor                                   | °C    |
| 4  | TOB1   | Temperature of pressure sensor 1                                | °C    |
| 5  | TOB2   | Temperature of pressure sensor 2                                | °C    |
| 10 | ConTc  | Conductivity Temperature Compensated version 5.21-XX.XX only    | mS/cm |
| 11 | ConRaw | Conductivity Raw Value version 5.21-XX.XX only                  | mS/cm |

\* Dependent on definition in function 32.

The **STAT** byte contains the current status.

|              |      |      |      |      |    |    |    |     |
|--------------|------|------|------|------|----|----|----|-----|
| Bit position | .7   | .6   | .5   | .4   | .3 | .2 | .1 | .0  |
| Name         | /STD | ERR2 | TOB2 | TOB1 | T  | P2 | P1 | CH0 |

A set **/STD** bit indicate whether the transmitter is in Power-up mode, otherwise it is in Standard mode.

A set **ERR2** bit denotes that a computation error has occurred in the calculation process for the analogue output. This occurs if the analogue Signal is in saturation (depends on the scaling). version 5.20-XX.XX only

A set **CH0, P1, P2, T, TOB1, TOB2** bit indicates that a measuring or computation error has occurred in the channel concerned.

For details in error-handling see chapter **Error handling and recognition!**



## Function 74 : Read value of a channel (32bit integer)

### Request:

|         |    |    |         |         |
|---------|----|----|---------|---------|
| DevAddr | 74 | CH | CRC16_H | CRC16_L |
|---------|----|----|---------|---------|

### Response:

|         |    |    |    |    |    |      |         |         |
|---------|----|----|----|----|----|------|---------|---------|
| DevAddr | 74 | B3 | B2 | B1 | B0 | STAT | CRC16_H | CRC16_L |
|---------|----|----|----|----|----|------|---------|---------|

### Exception errors:

- 2 If CH > 5
- 3 If message length is incorrect
- 4 *Class.Group -Year.Week = 5.20-5.50 and earlier:* If a channel is in overflow/underflow/inactive state or the data is invalid.  
For newer versions: overflow/underflow/inactive state is showed by value. See Chapter 6.3
- 32 If device has not yet been initialised

### Note:

Same as function 73, but values as 4-byte integer (long) B0 .. B3, where B3 is MSByte. The resolution is reduced to 0.1mbar.

Unit: CH0: \*10<sup>-5</sup>

P1 and P2: Pascal (1Pa = 10<sup>-5</sup> bar).

T, TOB1 and TOB2: 0.01°C

ConTC and ConRaw are not available with F74

Status-Byte (STAT): See function 73.

For details in error-handling see chapter **Error handling and recognition!**



## 5.10 Function 95 : Commands for setting the zero point

### Requests:

Request a:

|         |    |     |         |         |
|---------|----|-----|---------|---------|
| DevAddr | 95 | CMD | CRC16_H | CRC16_L |
|---------|----|-----|---------|---------|

Request b with set point:

|         |    |     |    |    |    |    |         |         |
|---------|----|-----|----|----|----|----|---------|---------|
| DevAddr | 95 | CMD | B3 | B2 | B1 | B0 | CRC16_H | CRC16_L |
|---------|----|-----|----|----|----|----|---------|---------|

where B3:B0: Floating-point number IEEE754 format (4-byte B0 ... B3) for the set point.

### Response:

|         |    |   |         |         |
|---------|----|---|---------|---------|
| DevAddr | 95 | 0 | CRC16_H | CRC16_L |
|---------|----|---|---------|---------|

### Exception errors:

- 1 If in Power-up mode  
If data value is incorrect (NaN, INF, NINF) *Class.Group 5.21-XX.XX only*
- 2 If CMD invalid
- 3 If message length incorrect
- 32 If device is not yet initialised

### Note:

The following actions can be carried out with this function:

| CMD | Meaning  |
|-----|--|
| 0   | Set zero point of P1   |
| 1   | Reset zero point of P1 to standard value                           |
| 2   | Set zero point of P2   |
| 3   | Reset zero point of P2 to standard value                           |
| 4   | --   |
| 5   | --   |
| 6   | Set zero point of CH0  |
| 7   | Reset zero point of CH0 to standard value                          |
| 8   | Set zero point of T version 5.21-XX.XX only                        |
| 9   | Reset zero point of T to standard value version 5.21-XX.XX only    |
| 10  | Set zero point of TOB1 version 5.21-XX.XX only                     |
| 11  | Reset zero point of TOB1 to standard value version 5.21-XX.XX only |
| 12  | Set zero point of TOB2 version 5.21-XX.XX only                     |
| 13  | Reset zero point of TOB2 to standard value version 5.21-XX.XX only |

### CMD 0, 2, 6, 8, 10, 12:

Zero point values for pressure channels P1, P2 and the calculated channel CH0 and T, TOB1, TOB2. These values can also be read via function 30 and written via function 31.

Request a: The zero point is calculated such that the current measured value = 0.0.

Request b: The zero point is calculated such that the current measured value equals the set point (B3:B0).

### CMD 1, 3, 7, 9, 11, 13: Reset zero point to factory setting

The zero point values are reset to 0.



## 5.11 Function 100 : Read configuration

### Request:

|         |     |       |         |         |
|---------|-----|-------|---------|---------|
| DevAddr | 100 | Index | CRC16_H | CRC16_L |
|---------|-----|-------|---------|---------|

### Response:

|         |     |       |       |       |       |       |         |         |
|---------|-----|-------|-------|-------|-------|-------|---------|---------|
| DevAddr | 100 | PARA0 | PARA1 | PARA2 | PARA3 | PARA4 | CRC16_H | CRC16_L |
|---------|-----|-------|-------|-------|-------|-------|---------|---------|

### Exception errors:

- 2 If index > 8
- 3 If message length is incorrect
- 32 If device is not yet initialised

### Note:

This function supplies the information about the configuration of the device. **Please use Function 32 instead of this function** for devices of *Class.Group 5.20-5.24 and earlier*. With function 32/33 you have access to a single parameter instead of all five parameters.

A pressure transmitter can read two independent pressure sensors (P1 and P2), plus the temperatures of the respective pressure sensors (TOB1 and TOB2) and an independent temperature ( T ).

| Index | Para0 | Para1 | Para2      | Para3 | Para4  |
|-------|-------|-------|------------|-------|--|
| 0     |       | UART  | FILTER_ORG |       |  |
| 2     | CFG_P | CFG_T | CFG_CH0 *  | CNT_T | High Nibble   Low Nibble*<br>LP-Filter   CNT_TCOMP |
| 3     |       |       | FILTER     |       | DAC *  |

\*: Not for *Class.Group 5.21-XX.XX*

For details see description in function 32 / 33. For change the configuration use function 33.



## 6 Appendix

### 6.1 Interface converter

The serial RS232 interface or the USB interface can be used for connection to a PC. KELLER offers converters for this purpose. Various other products are commercially available, however. The following requirements apply when working with KELLER software:

- The converter must control transmit / receive switch-over automatically.
- KELLER converters feature a hardware echo, i.e. the transmitted message is received again immediately as an echo. This echo is required by some KELLER software programmes.

### 6.2 Floating-point format IEEE754

As data transmission is effected byte-wise (8-bit data), the floating-point values are represented as follows:

B0: Bit 0..7;      B1: Bit 8..15,      B2: Bit 16..23,      B3: Bit 24..31

#### Representation in accordance with IEEE754:

| B3 DATA H (Reg. 0) | B2 DATA L (Reg. 0) | B1 DATA H (Reg. 1) | B0 DATA L (Reg. 1) |                       |
|--------------------|--------------------|--------------------|--------------------|-----------------------|
| b01000001 (0x41)   | b00101001 (0x29)   | b00000010 (0x02)   | b11011110 (0xDE)   | Valid Number          |
| b01111111 (0x7F)   | b10000000 (0x80)   | b00000000 (0x00)   | b00000000 (0x00)   | $\infty$ / Overflow   |
| b11111111 (0xFF)   | b10000000 (0x80)   | b00000000 (0x00)   | b00000000 (0x00)   | $-\infty$ / Underflow |
| bx11111111 (0xFF)  | b11111111 (0xFF)   | b11111111 (0xFF)   | b11111111 (0xFF)   | Not a Number          |

1 bit Sign + 8 bit Exponent + 23 bit Mantis = 32 bit

#### Calculation of the value transmitted:

$$V = (-1)^S \cdot (1.0 + \frac{M}{2^{23}}) \cdot 2^{E-127}$$

$$0 = 0$$

$$10000010 = 130$$

$$01010010000001011011110 = 2687710$$

$$-1^0 * (1.0 + \frac{2687710}{8388608}) * 2^{130-127} = 10.5631999969482421875$$

These values directly show the value in the requested unit [bar] or [°C].

$$\Rightarrow 10.5632 \text{ bar}$$

#### Usage of Keller software:

If you use the DLL which is available from KELLER, you do not need to carry out conversion, as this is encapsulated in the DLL.

If you wish to address the devices directly, however, you must convert the individual bytes into a floating-point value.

To obtain a floating-point value from the individual bytes, proceed as follows:

1. Define data structure in which an array of 4 bytes and a 32-bit floating-point value is defined at the same memory location.
2. Write the bytes into the byte array.
3. Read out the floating-point value.

You do not need to carry out any actions, therefore, as the computer attends to interpretation. Some microcontrollers have a different data structure for floating-point values. In such cases, adaptation is necessary.



### 6.3 Error handling and recognition

The electronic unit can read five signals: pressure values from two pressure sensors (**P1**, **P2**), temperature values from both of these pressure sensors (**TOB1**, **TOB2**) and temperature value from one additional temperature sensor (**T**). Additionally, out of these values, other values can be calculated (**CH0**). These values are described as **channels** in this documentation. To check if the channels are active one may use function F32 (or MODBUS addresses 0x0204-0x0206) (refer to according chapter).

#### Measuring range

The signals are being measured with an analogue to digital converter (ADC). The measuring range is limited upwards and downwards.

For the pressure signals P1 and P2 the limitation is depending on the compensated pressure range, which can be read out with function 30 (as well as MODBUS function 3 [range 0x03xx] from version 5.20-10.XX and later and 5.21-XX.XX).

Readable range: (pressure range minimum – 10%) up to (pressure range maximum + 10%)

Is the pressure below or above this range, then the bit in the Status-Byte will be set. The measured value itself is no longer valid when the Status-Bit is set.

#### Dependencies

P1 and P2 are temperature-compensated and therefore they are depending on temperature. Channel CH0 is always depending on P1 and / or P2 and on a temperature channel. Is there a fault in one of these dependencies so the depending channel will follow accordingly.

#### 6.3.1 What is new in version 5.20-10.40 (and later) and 5.21-XX.XX

Version **5.20-10.40** (available end of 2010) and later will display additionally to the Status-Bit also an error in the value itself. The format follows the special indications according to floating point arithmetic: **NaN**, **+Inf** (ovl), **-Inf** (ufl). See chapter floating-point Format IEEE754.

|              | <b>CH0</b>                                | <b>P1 / P2</b>                     | <b>TOB1 / TOB2</b>                               |
|--------------|---|------------------------------------|--|
| <b>NaN</b>   | Dependency error (P1, P2 = NaN or +/-Inf) | +/-Inf in compensating T-channel   | -  |
| <b>+Inf</b>  | -   | ADC value out of range (Overflow)  | ADC value out of range (Overflow) or T > 300 °C  |
| <b>-Inf</b>  | -   | ADC value out of range (Underflow) | ADC value out of range (Underflow) or T < - 70°C |
| <b>0.000</b> | Sqrt: ( p < Pcutoff )                     | -                                  | -  |

The values NaN, +Inf and –Inf are defined in the IEEE754 standard and are described in chapter Floating-point format IEEE754.

NaN is also shown, when the requested channel is not active. In this case, the Status-Bit is not set.

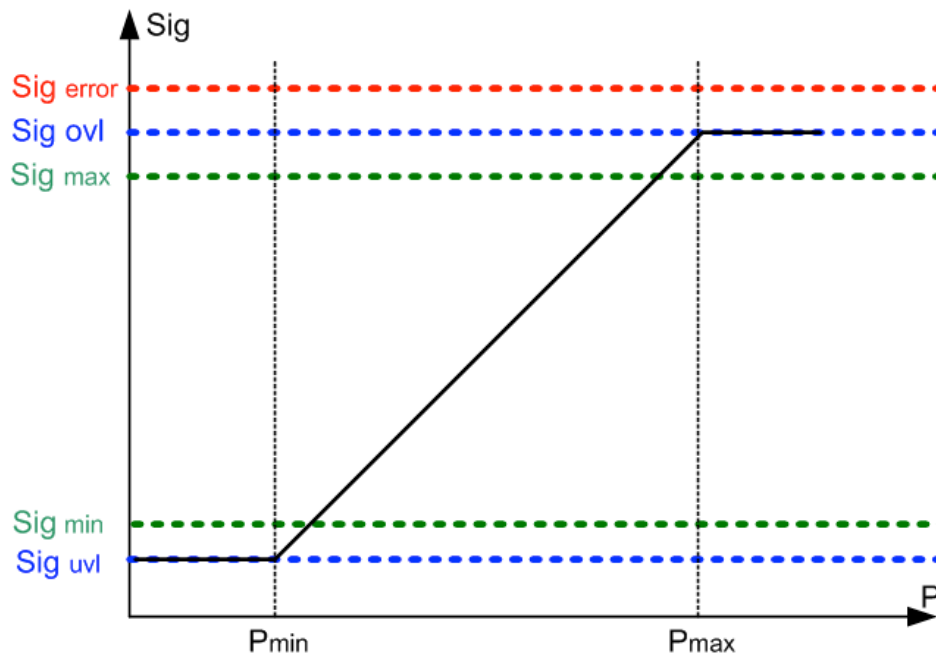
Special Integer Values (F74, F3):

|                  | <b>32bit signed integer</b> | <b>16bit signed integer</b> |
|------------------|-----------------------------|-----------------------------|
| <b>NaN, +Inf</b> | 2147483647 (0x7FFFFFFF)     | 32767 (0x7FFF)              |
| <b>-Inf</b>      | -2147483648 (0x80000000)    | -32768 (0x8000)             |



### 6.3.2 Analogue Output

The analogue output has to transfer the error states described in the former chapter and therefore additional analogue states were introduced. The graph below shows the transfer function between pressure (in this example the analogue output is a function of  $P$  – however it could also be some other mathematical function using  $CH0$ ). The black line shows the transfer function for a positive DAC-gain. The  $Sig_{error}$  is independent of any scaling function and represents an internal error state (source has NaN, see table above).



The following table shows possible analogue values for different hardware types:

|                            | 0-10 V, (0..5V) | 0-2.5 V | 4-20 mA | Dig. representative |
|----------------------------|-----------------|---------|---------|---------------------|
| <b>Sig<sub>error</sub></b> | 11.6 V          | 2.9 V   | 22.5 mA | NaN                 |
| <b>Sig<sub>ovl</sub></b>   | 11 V            | 2.75 V  | 21.8 mA | +Inf                |
| <b>Sig<sub>max</sub></b>   | 10 V            | 2.5 V   | 20 mA   | value               |
| <b>Sig<sub>min</sub></b>   | 0 V             | 0 V     | 4 mA    | value               |
| <b>Sig<sub>uvl</sub></b>   | -1 V            | -0.3 V  | 3.3 mA  | -Inf                |

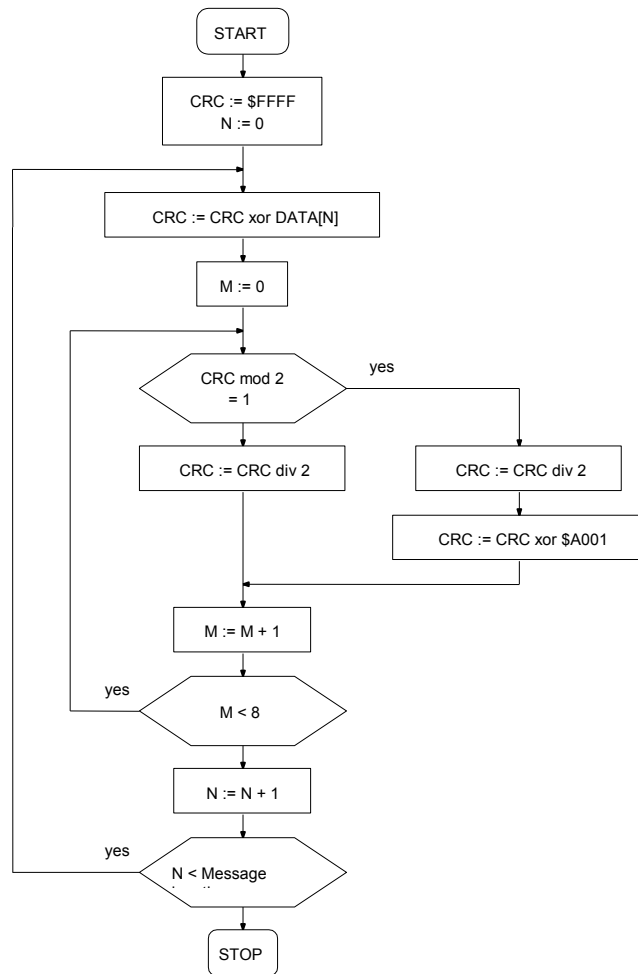




## 6.4 Calculation of the CRC16 checksum

The checksum can either be calculated or derived from a table.  
Here is an example of CRC16 calculation in C:

```
////////////////////////////////////  
// CRC-16 calculation in C  
//  
// Calculation of CRC-16 checksum over an amount of bytes in the serial buffer.  
// The calculation is done without the 2byte from crc16 (receive-mode).  
// SC_Buffer[]: Byte-Buffer for the serial interface. Type: unsigned char (8bit)  
// SC_Amount : Amount of Bytes which should be transmitted or are received (without CRC16)  
//  
////////////////////////////////////  
void CalcCRC16(unsigned char* CRC_H, unsigned char* CRC_L)  
{  
    // locals  
    unsigned int Crc;  
    unsigned char n, m, x;  
  
    // initialisation  
    Crc= 0xFFFF;  
    m= SC_Amount;  
    x= 0;  
  
    // loop over all bits  
    while(m>0)  
    {  
        Crc^= SC_Buffer[x];  
        for(n=0; n<8; n++)  
        {  
            if(Crc&1)  
            {  
                Crc>>= 1;  
                Crc^= 0xA001;  
            }  
            else  
                Crc>>= 1;  
        }  
        m--;  
        x++;  
    }  
    // result  
    *CRC_H= (Crc>>8)&0xFF;  
    *CRC_L= Crc&0xFF;  
}// end CalcCRC16
```



This results in the following calculation for function 48 with device address 250: CRC16\_H= 4, CRC16\_L= 67.

Examples showing use based on a table are to be found in the MODBUS documentation at:

<http://www.modbus.org>



## 6.5 Changes

- **Document version 2.1**, 19. October 2005: New function 32 and 33 for device *Class.Group -Year.Week = 05.24* and earlier, F75: cancelled.
- **Document version 2.2**, 16. August 2006:  
Description for function 32/33 revised. Function 101 added. Formula for scaling of the analogue output corrected.
- **Document version 3.0**, 20. December 2010:  
Added Modbus (chapter 4) support for *Class.Group=5.20-10.XX*  
Modbus Implementation of Functions (3,6,8 and 16) with support of all functions covered by the Keller Bus protocol.  
Added chapter error handling and recognition  
Modified chapter "Floating-point format IEEE754"
- **Document version 3.1**, 14. August 2012:  
Added changes of *Class.Group=5.20-12.28*
- **Document version 3.2**, 12. August 2013:  
*New device family Class.Group=5.21-XX.XX* added.
- **Document version 3.3**, 1. November 2014:  
*Commands for Conductivity Sensor added in Class.Group=5.21-XX.XX.*
- **Document version 3.4**, 1. June 2015:  
*New commands for Conductivity Sensor added in Class.Group=5.21-XX.XX.*

## 6.6 Software versions

An overview of the released versions for **Class.Group 5.20-XX.XX**:

| Version<br>Year.Week | Date of<br>production | Major changes   |
|----------------------|-----------------------|---|
| <b>2.40</b>          | 2002..2003            | Base version  |
| <b>3.50</b>          | 2003 .. 2006          | - CH0: add option Line pressure compensation  |
| <b>5.50</b>          | 2006 .. 2010          | - Hardware redesign to increase robustness under EMC<br>- add Low pass Filter and adaptive Filter for pressure channels<br>- Switch2 option cancelled<br>- only two temperature channels possible: TOB1 and TOB2 or T<br>- sqrt calculation without scaling factor<br>- add function F32 and F33 for configuration access<br>known issue: CRC of exception code using MODBUS F3 is wrong  |
| <b>10.40</b>         | 2011...2012           | - Improved error handling: see error handling and recognition<br>- Switch option: cancelled<br>- CH0: Curve fitting added (CFG_CH0= 14), SF6 calculation: cancelled (CFG_CH0=7..10)<br>MODBUS protocol:<br>- CRC16 in case of an exception corrected<br>- F3: access to all registers as in the KELLER protocol (Information and config values)<br>- Serial buffer increased from 10 to 13Bytes → readout of 2 values possible in one task<br>- F6, F8, F16 added: Configuration and calibration also with MODBUS<br>known issue:<br>- MODBUS F3 0x0010 ..0x001A: not usable<br>- CH0 scale (Coeff 70 and 71) must be default (Nr.70 = 0.00, Nr. 71 = 1.00) |
| <b>12.28</b>         | Aug. 2012..           | - CH0 scaling: corrected<br>- MODBUS F3:<br>0x020E, 0x020F: Read firmware version added<br>Int 16Bit values 0x0010 .. 0x0015 compatible with version 5.20-5.50<br>0x0020 .. 0x002A: integer 32bit for process values added  |



### An overview of the released versions for Class.Group 5.21-XX.XX:

Main differences between Group 20 and the new added Group 21.

- Group 21 has no analogue output only digital communication
- Group 21 has a SDI-12 communication interface and is able to work as SDI-12 device
- Group 21 has a higher ADC resolution for pressure and temperature channel
- Group 21 has a larger buffer size for RS485 communication.

| Version<br>Year.Week | Date of<br>production | Major revision                               |
|----------------------|-----------------------|--|
| 13.33                | August 2013           | Base version                                 |
| 13.35                | August 2013           | Implementation of HW identification          |
| 14.35                | August 2014           | Implementation of the conductivity sensor    |
| 15.25                | August 2015           | Adaption of threshold values of conductivity |

### 6.7 Support

We are pleased to offer you support in implementing the protocol. Use our free PC-software CCS30 for communication and configuration. Also divers for LabView, C#, etc. are available on our website: <http://www.keller-druck.com>

#### **KELLER AG für Druckmesstechnik**

St. Gallerstrasse 119 • CH-8404 Winterthur

Tel: ++41 52 235 25 25

<http://www.keller-druck.com>